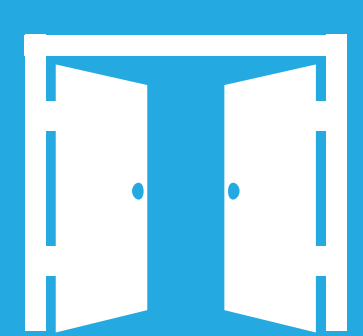


Where Did Our **BOND** Money Go?

Proceeds from the
2014 - 2022 Bond Program

New School

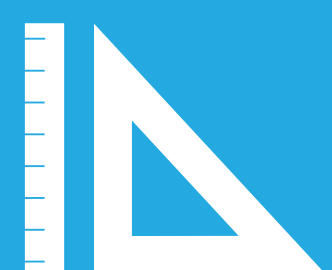
TUMWATER Middle School



Opened September 2016
as a Swing School
Opening
Fall 2021



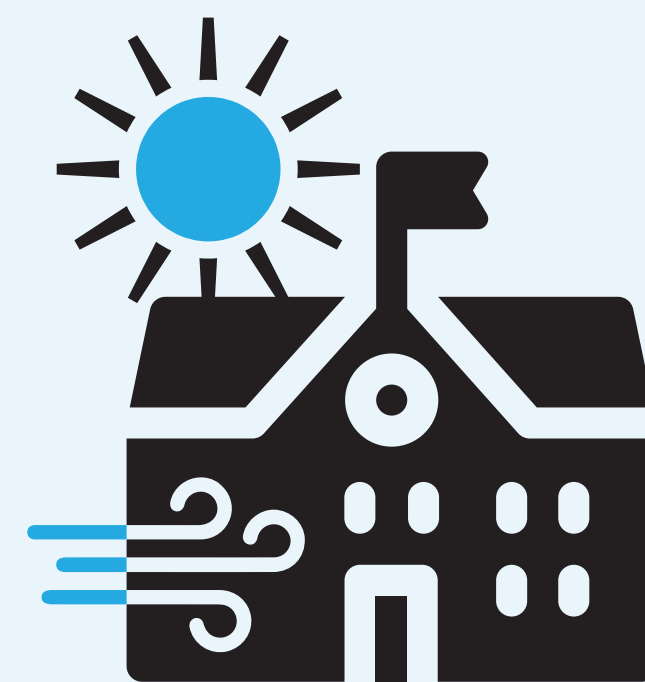
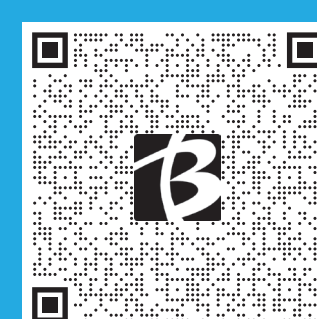
\$61.3 Million



166,000 sq. ft.
16 Acre Lot

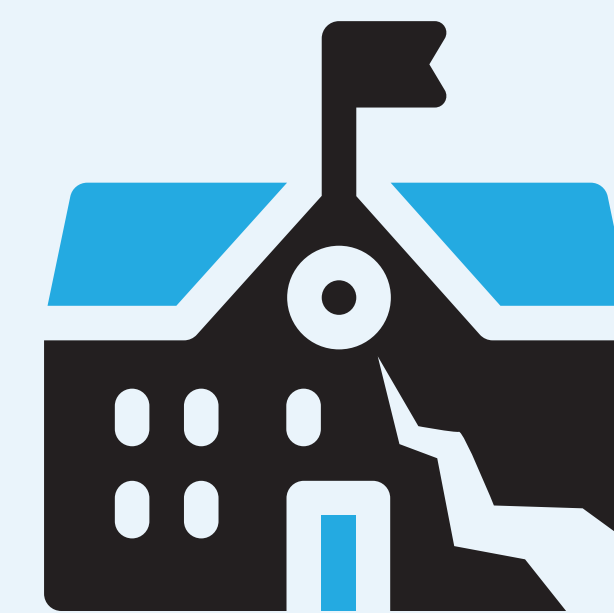


1,100
Student Capacity



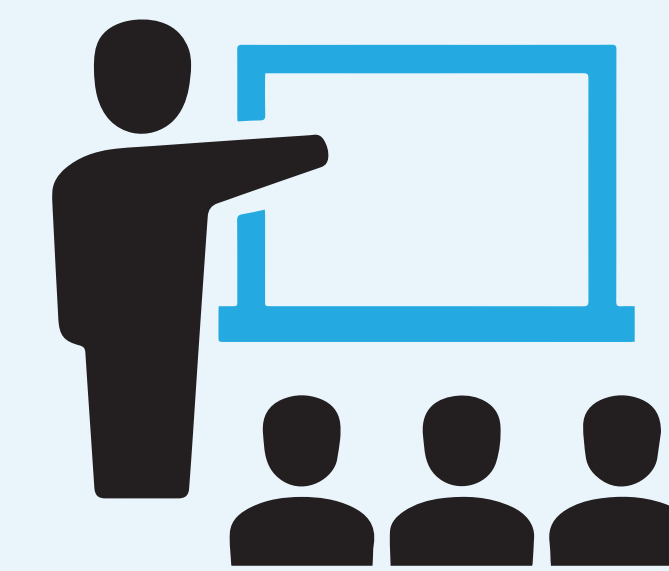
Natural Light & Fresh Air

Abundant natural light & constant
fresh outside air to all classrooms



Seismic Reinforcement

Structure allows for immediate
occupancy & community shelter
after a seismic event

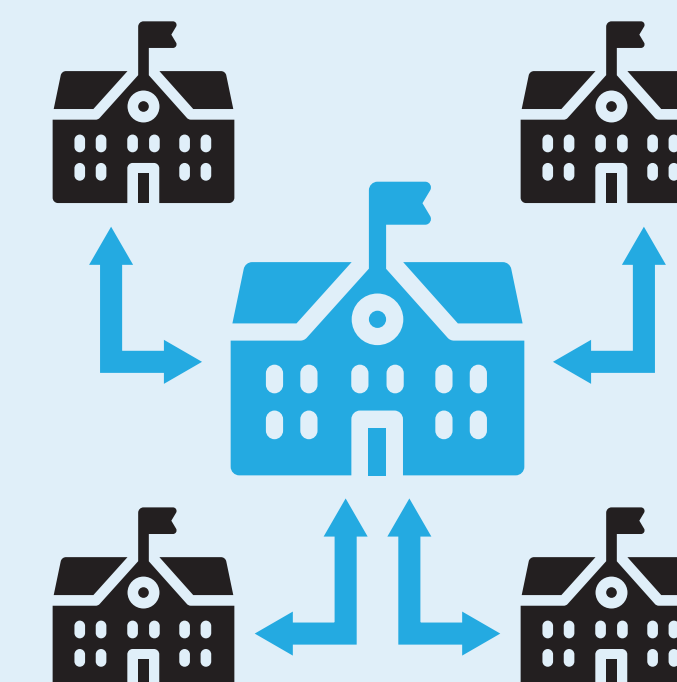


**36 General Education,
3 Special Education &
6 Science Classrooms**



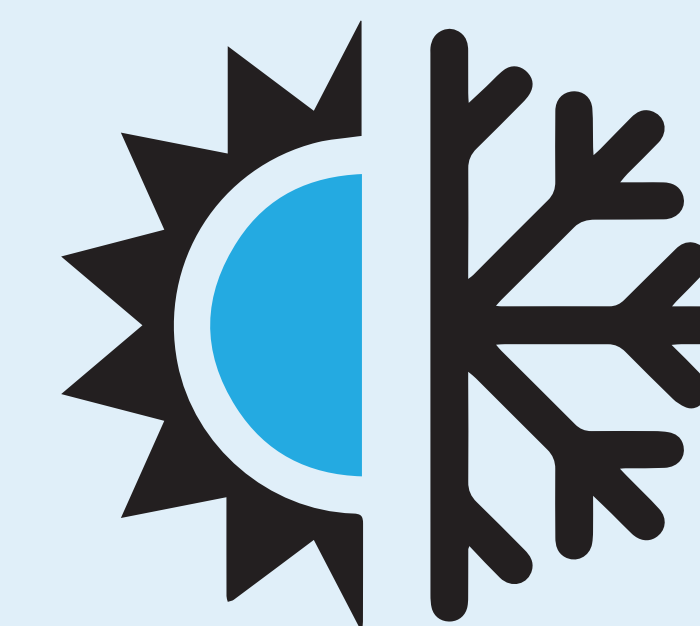
Large Venue for School & Community Events

Centrally located gym,
commons & courtyard



Swing School

Utilized as a swing school since
September 2016 (Vose, Hazeldale,
William Walker & ACMA)



State of the Art HVAC Systems

Efficient heating & cooling



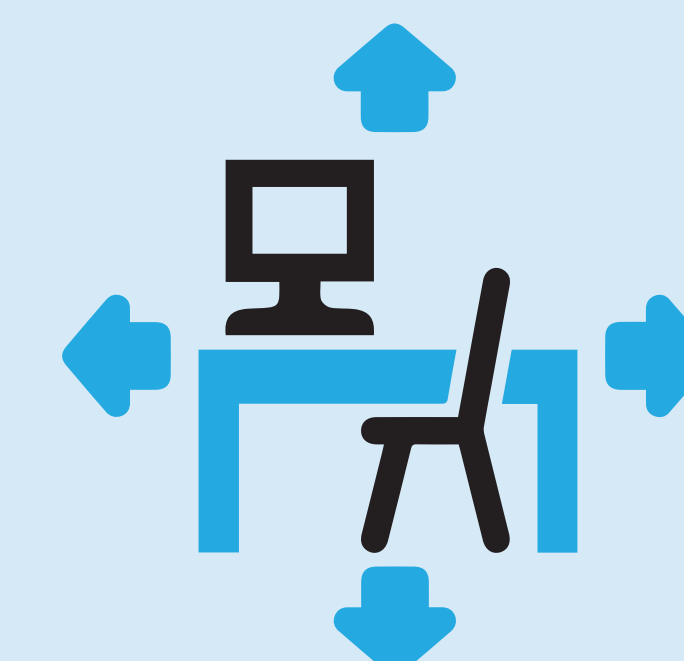
Enhanced Security

Building design incorporates
current district standards



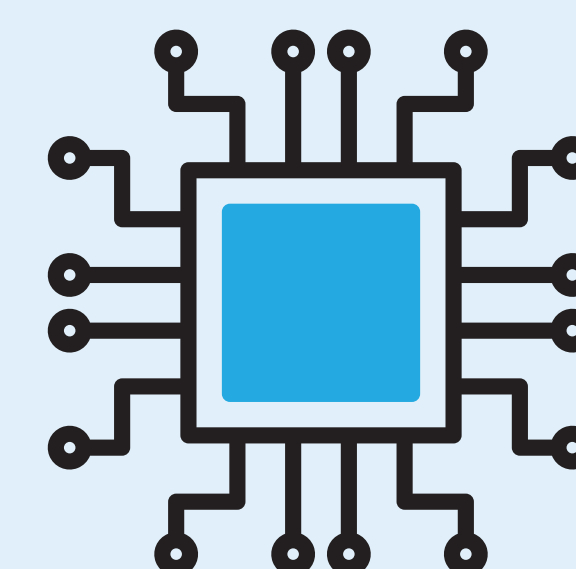
Building is a Learning Tool

Visible seismic bracing and plexi
panel looking into ceiling



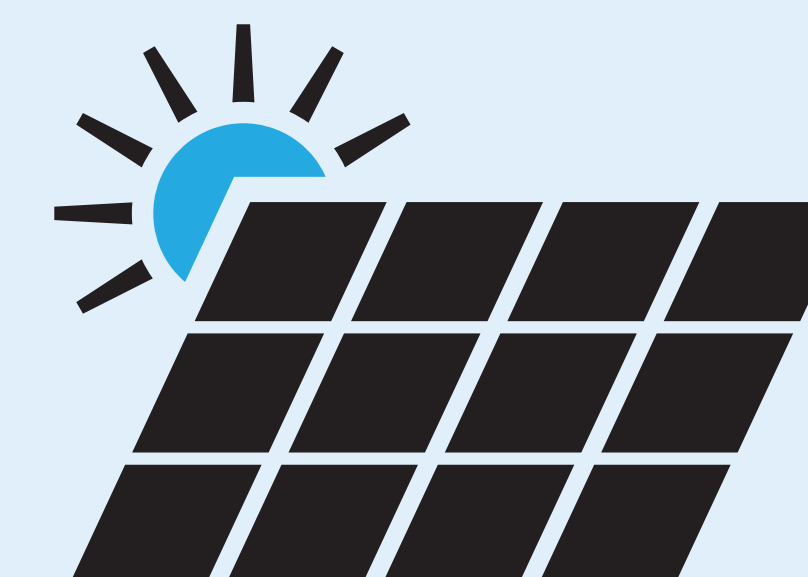
Adaptable, Flexible Spaces

Improved spaces for learning
& collaboration



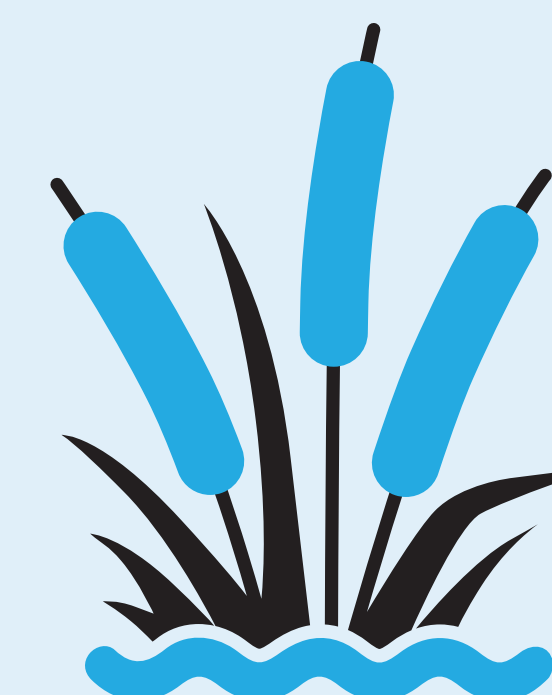
Learning Technology

Leading edge technology &
infrastructure for future developments



Solar Panels

Generate 172 kW-hours



Low Impact Development Approach

Site designed for responsible
stormwater management